

George  
Reference 020051

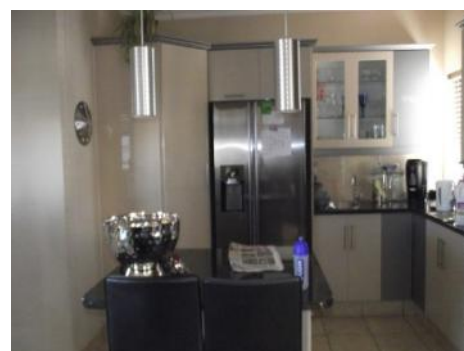
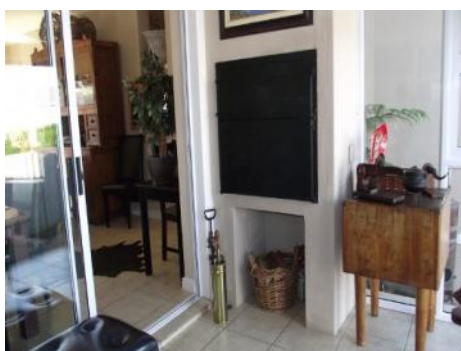
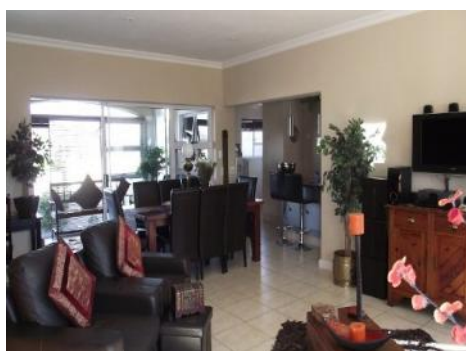


## Modern house in George

living space: 253 m<sup>2</sup>  
plot area: 695 m<sup>2</sup>  
bedrooms: 3  
bathrooms: 3  
sea view: -

energy certificate: in process

price: \$ 262,765.-



## George

### Reference 020051



### Details:

This beautiful house is situated in a popular security complex. The property includes approx. 695 sqm; the living area is about 253 sqm. The three bright and spacious modern bedrooms have an en suite bathroom with double basins. The large entrance hall leads directly into the living room with dining area. Furthermore the property has a kitchen.

In addition the house is featured with tiles and carpet.

Also there is a laundry room and a braai area.

The property has open spaces and offers a beautiful view of the mountains of George.

## George

### Reference 020051



### Location & surrounding area:

George is situated about 430 km from Cape Town. With about 213,757 inhabitants, the town is one of the largest of Western Cape's.

Only a few kilometers from the Indian Ocean, George spreads out on a plateau on the southern edge of the Outeniqua Mountains.



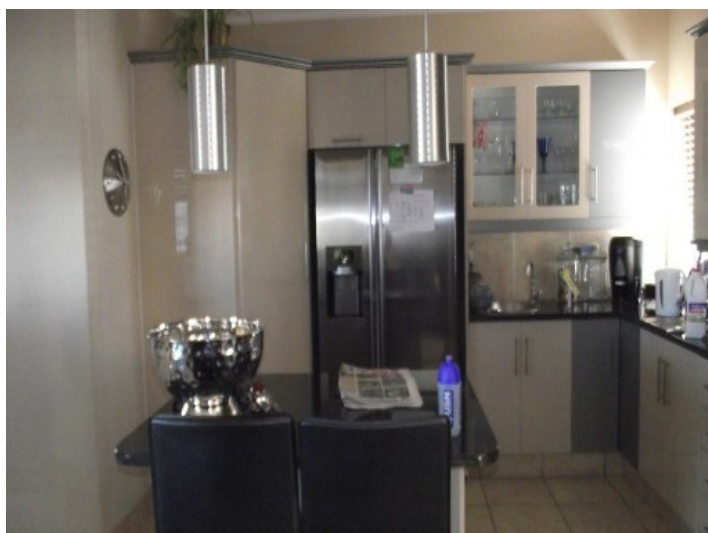
George  
Reference 020051



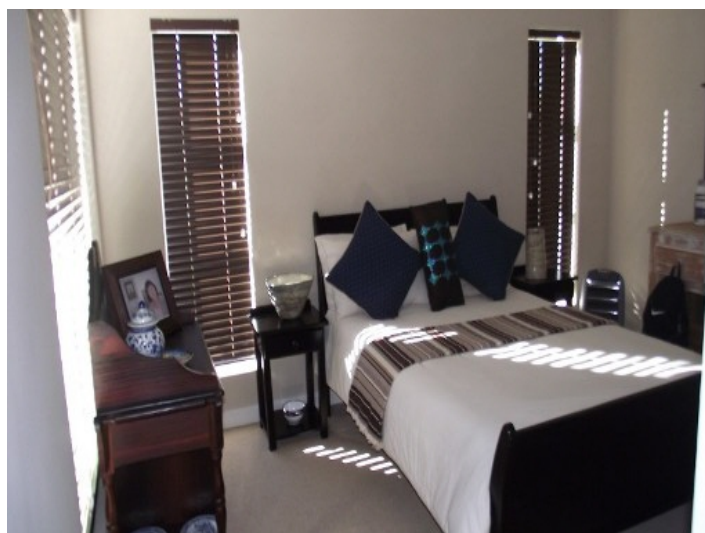
Comfortable living room



Nice fireplace



Modern kitchen with dining area



Beautiful bedroom



Garden

All information is correct to the best of our knowledge. Errors and prior sale excepted. This prospectus is purely for information purposes. Only the notarized deed of sale is legally binding.

PORTA MONDIAL • C./ CONQUISTADOR 8, E-07001 PALMA DE MALLORCA  
TEL. +34 971 720 164 • INFO@PORTAMONDIAL-SOUTHAFRICA.COM